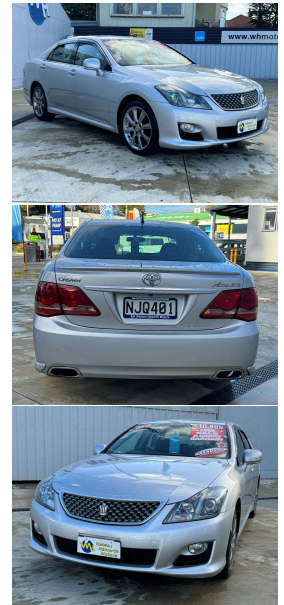
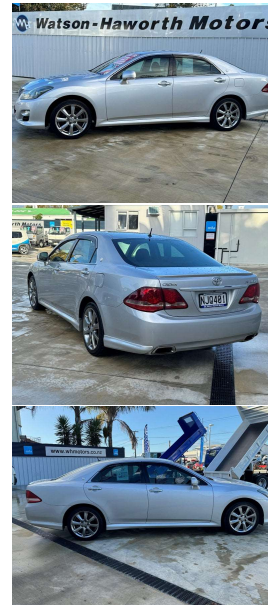


# 2008 Toyota Crown Athlete \*\*2.5 V6\*\* Great



## VEHICLE INFORMATION

### Cash Price

Includes GST

# \$9,990

Finance this vehicle from only

# \$80.84

per week\*



Gain peace of mind with Mechanical Breakdown Insurance. Ask us how.

### Body

Sedan

### Odometer

178,000 km

### Engine

2500 cc

### Fuel Type

Petrol

### Transmission

Tiptronic Auto

### Fuel Saver Rating

1.50 out of 6 stars

### VIN

-

### Reg No.

njq401

### Ext Colour

Bright Silver Metallic

### History

-

### Seats

5 seats

### Interior

-

### Audio

-

### Stock ID

109957

## Features / Comments

**\*\*Newer Shape GRS200 Version\*\***

Premium Toyota Crown Athlete Powered With The Powerful Yet Very Economical And Silky-Smooth 2.5 V6 Engine, Looks Great In Bright Silver Metallic With Factory Fitted Sports Alloy Wheels, Dark Tinted Glass, Rear Spoiler, Monsoons, Driving Lights Etc.

Loads Of Options Including 11 SRS Airbags, Reverse Camera, Cruise Control, Dual Zone Digital Climate Air, Power Leather Seats With Heating And Cooling Functions, Seat Covers, Traction/Stability Control, Multi-Function Steering Wheel, ABS, Factory Illuminated Sill Trims, Premium Floor Mats, Trip Computer, Full Electric Options, A Whole Lot Of Car For The Money!

Beautiful To Drive With Modern Looks And Dynamics, Smooth And Comfortable To Drive With Plenty Of Power, Big Boot, Loads Of Interior Space, Returning Very Good Fuel Economy With Total Toyota Reliability And Build Quality.

\* Premium Version



Te Awamutu, Phone 0800 16 90 90, Email whmts@xtra.co.nz  
52-88 Kihikihi Road, Te Awamutu

\*Finance calculation based on a 36 month term, no deposit and with an example annual fixed interest rate of 11.45%. Actual interest rate may be higher or lower. Includes an establishment fee of \$380 and a monthly maintenance fee of \$8.24. Full term amount payable of \$12,611. Estimate only, not an offer of finance. Terms, conditions and lending criteria apply.